

FOR LEASE

CORAL WAY SHOPPING PLAZA

±1,100 up to ±4,910^{sf} RETAIL SPACE



**Located at Coral Way & SW 97th Avenue
Miami, Florida**

- JOIN SEDANO'S, NAVARRO PHARMACY, AMSCOTT, METRO PCS, SUBWAY & FARM STORES
- PYLON SIGNAGE AVAILABLE ON CORAL WAY
- EXCELLENT VISIBILITY & FRONTAGE FOR THE 1,080 & 1,200 SF
- RETAILERS IN THE AREA –WALGREEN'S, WINN DIXIE, PUBLIX, OFFICE DEPOT & STAPLES

Demographics	1 MILE	3 MILES	5 MILES
Population	13,819	147,442	412,496
Average Household Income	\$98,238	\$90,291	\$86,481
Median Age	38.4	37.1	35.5

SUCHMAN

RETAIL GROUP

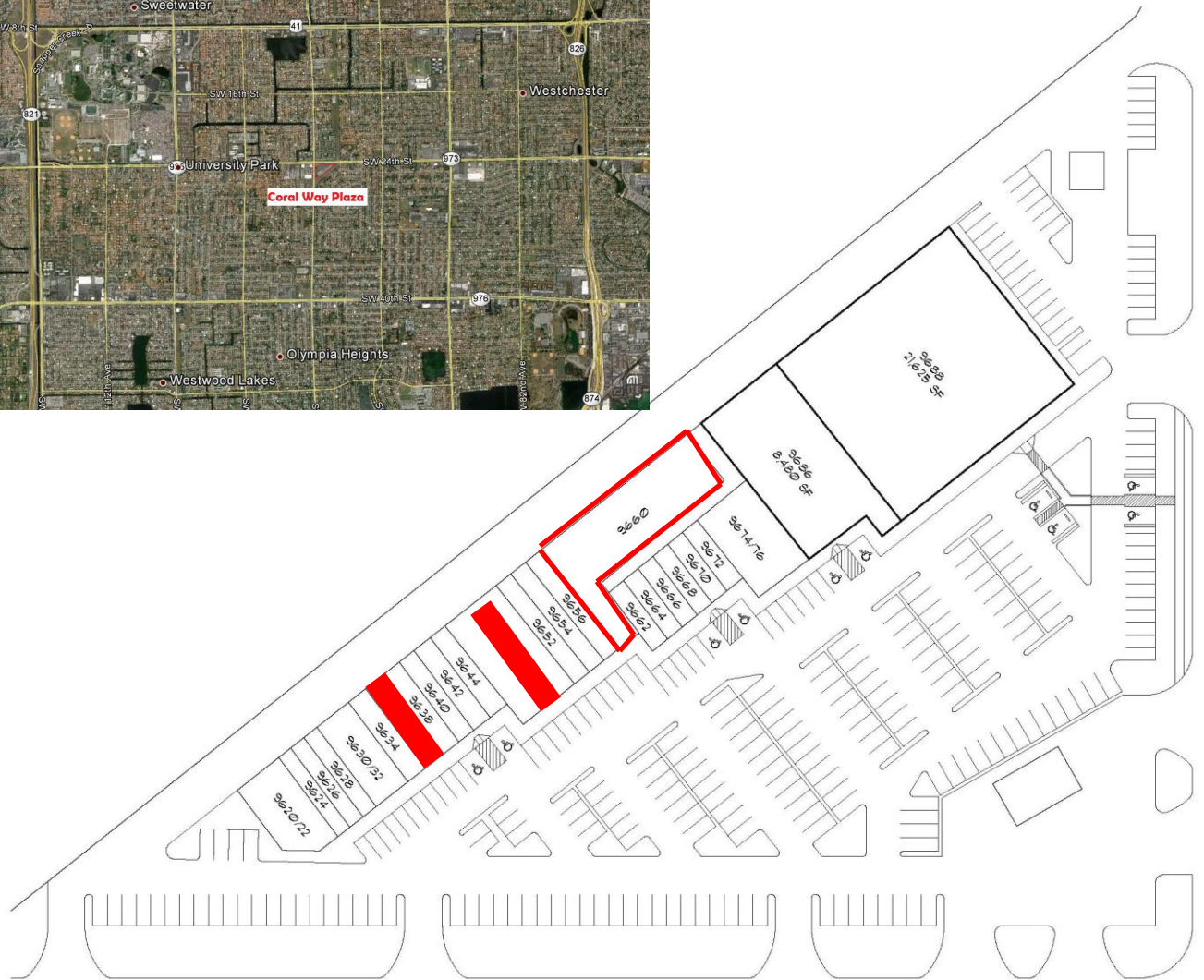
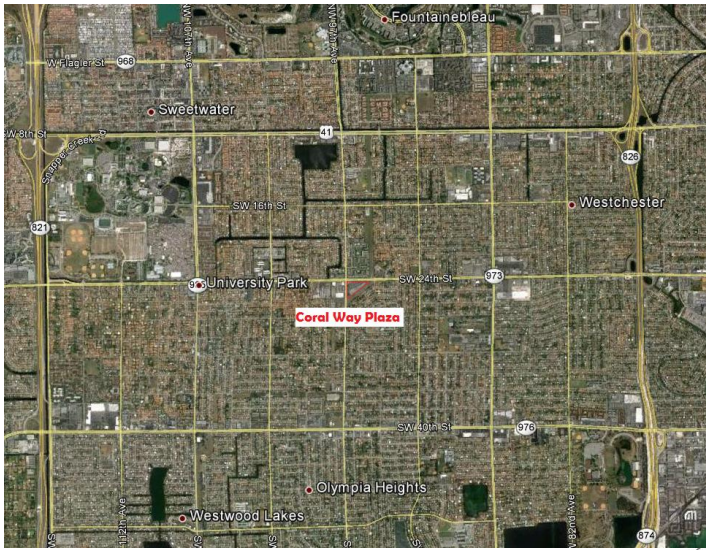
1550 Madruga Avenue, Suite 230
Coral Gables, Florida 33146
www.suchmangroup.com

Ana Vega-Garcia

ana@suchmangroup.com

305-667-6461 Ext. 11

Note: This offering is subject to errors, omission, and withdrawal from market, modification of terms and conditions or change of price without prior notice.



SOUTHWEST 9TH AVENUE

SW 24TH STREET (CORAL WAY)

EXISTING SITE PLAN
SCALE: 1"=30'-0"
N